



The University of Warsaw

(UW)

ERASMUS CODE - PL WARSZAW01
Erasmus University Charter EUC 45834
extended 2007-2013



The University of Warsaw in figures

Students:

Total number in 2008: ca. 65 000

Including over 1500 international students





The University of Warsaw in figures (2)

Teaching & research staff:

Total number in 2008: 3,100

including 840 professors

Other staff: ca. 2,100





**Studies in 44 fields
of Arts and Sciences**



**19 Faculties and 24
independent research
and teaching units**



Degree Programmes in English

International Business (MA/ second cycle)

International Economics (MA/ second cycle)

European Finance and Accounting (MA / second cycle)

Development Economics (MA / second cycle)

International Relations (MA / second cycle)

Political Science (MA / second cycle)



Degree Programmes in English (2)

European Studies (MA / second cycle)

Psychology (5 year MA)

Philosophy (3 year BA /first cycle)

Philosophy (2 year MA /second cycle)



Non–Degree Programmes in Foreign Languages

- > Executive MBA**
- > International MBA Programme**
- > Schools of: Polish Law, American Law, Italian Law,**
- > French and European Law Centre, Spanish Law Centre**
- School of German and European Law**
- > Post-diploma Polish Studies**



> **Courses taught in foreign languages**

www.ects.uw.edu.pl

> **E-learning**

COME - Centre for Open and Multimedia Education

www.come.uw.edu.pl

> **Polonicum**

Centre for Polish Language nad Culture for Foreigners

www.polonicum.uw.edu.pl



International Relations Office

- Coordinating international cooperation and agreements
- Managing incoming and outgoing short term mobility (SM, TSM, OSM)

In the 2007 calendar year:

- 4260 outgoing mobility flows
- 3843 incoming mobility flows



International Relations Office

- Managing the financial matters related to international mobility and cooperation
- Coordinating international visits
- Organizing events: SUMIT 2007, UNICA Student Conference 2008
- 15 members of staff

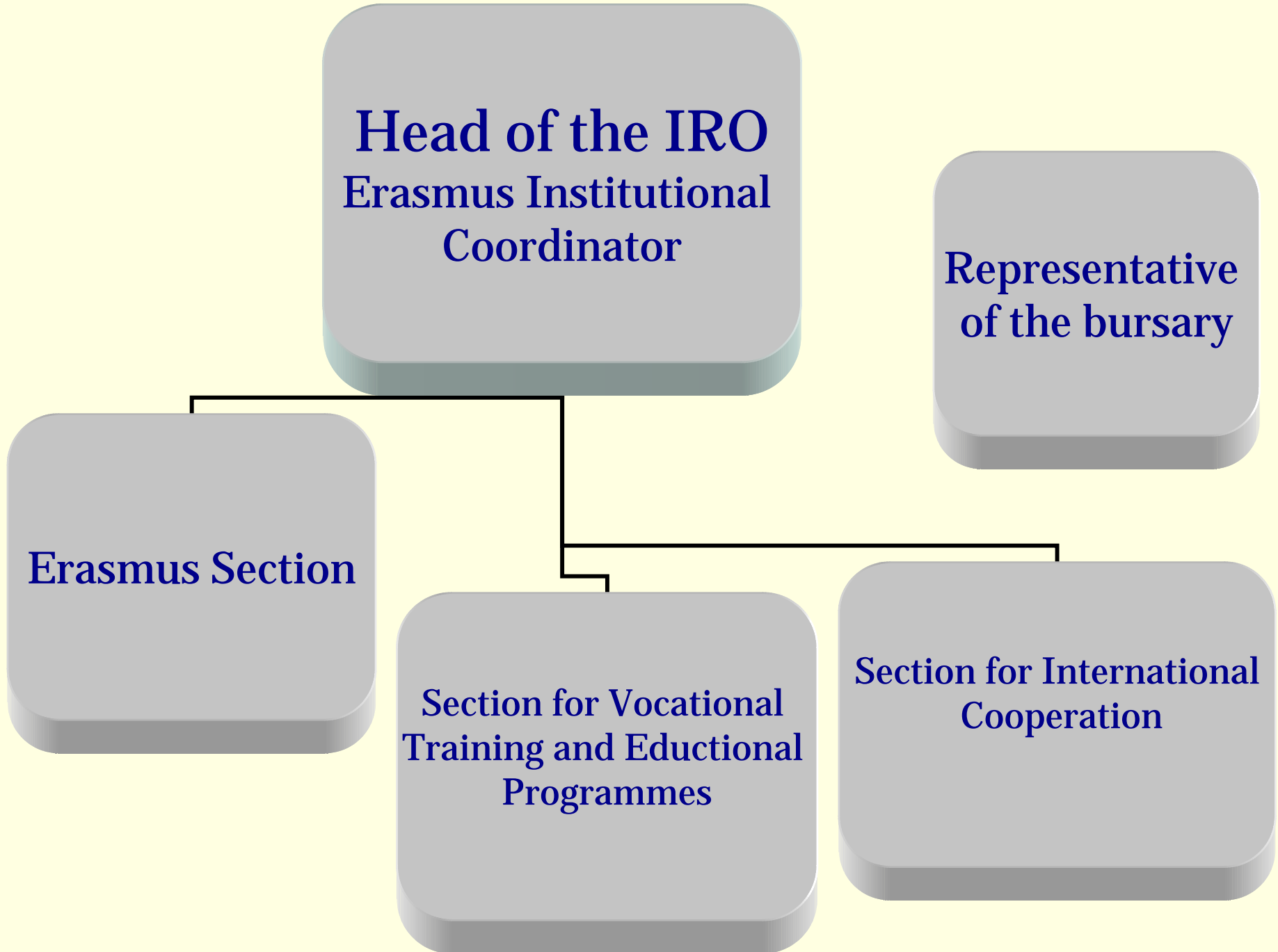
**Head of the IRO
Erasmus Institutional
Coordinator**

**Representative
of the bursary**

Erasmus Section

**Section for Vocational
Training and Educational
Programmes**

**Section for International
Cooperation**





International Cooperation

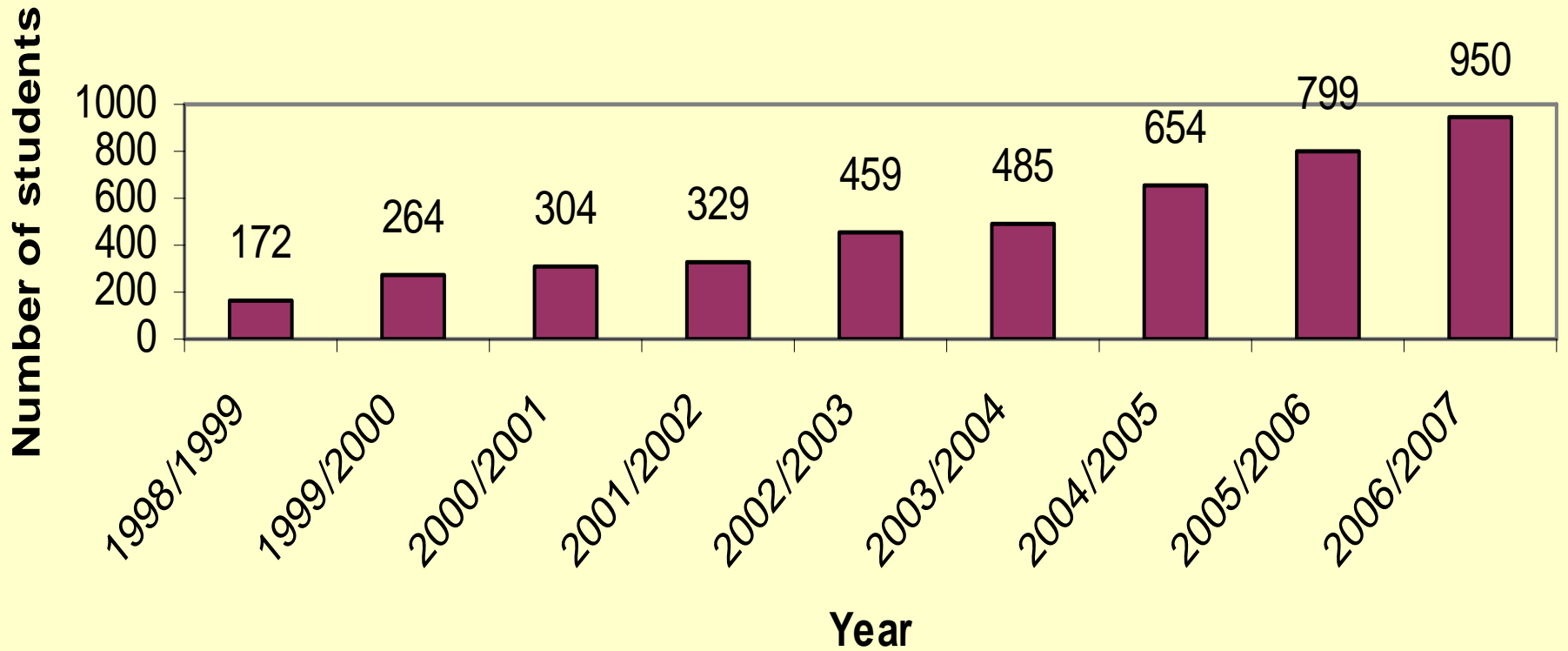
- **170 bilateral agreements**
- **103 projects within the 5&6 EU Research and Development Programmes**
 - 4 Centres of excellence in physics & computer modelling
 - 4 Networks of Excellence in Physics, Social Science and Economics
 - Marie Curie Training site in physics



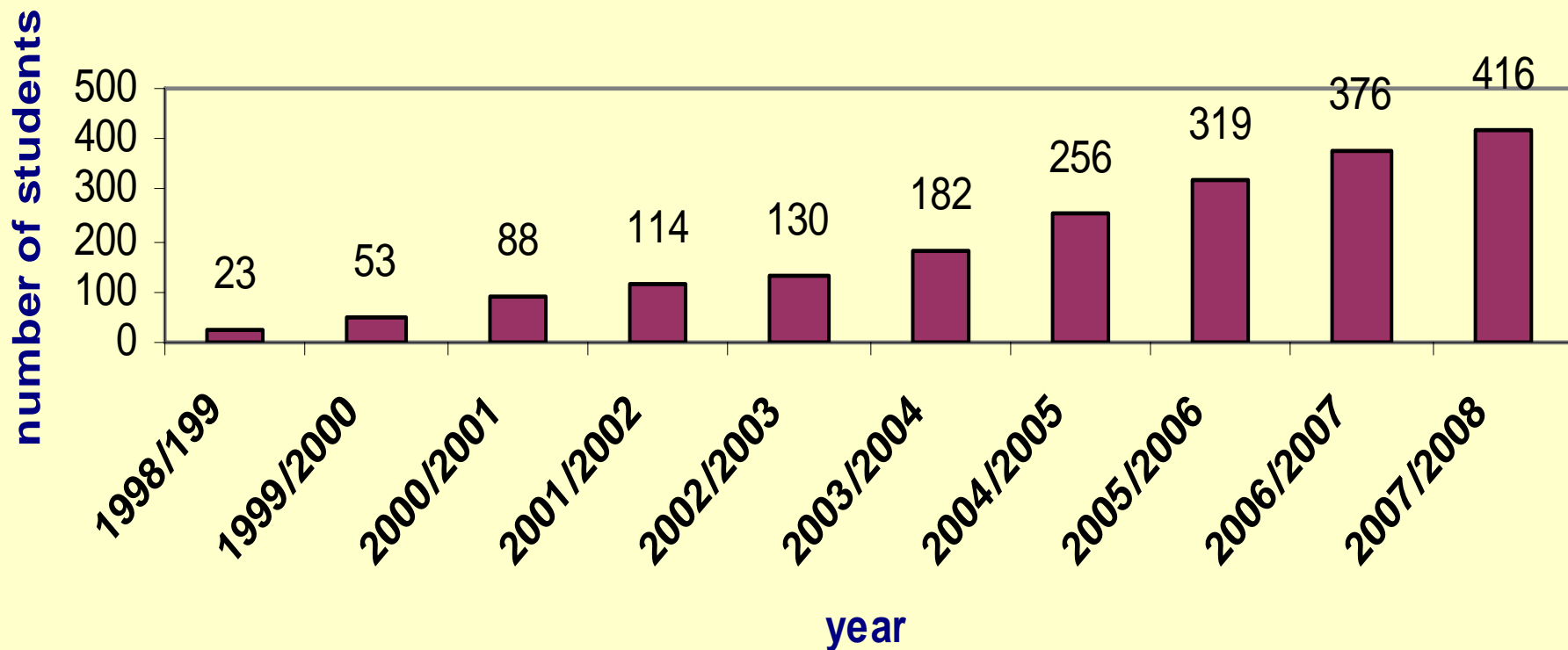
Erasmus at the University of Warsaw (98/99 - 06/07)

- 4,500 outgoing students
- 1,540 incoming students
- 650 teaching staff (TS) flows
- 8,4 million € spent (SM, TSM, OM only)

Outgoing Erasmus Students



Incoming Erasmus Students





Erasmus at the University of Warsaw

In 2007 the University of Warsaw was chosen by the European Commission as one of 20 Erasmus Success Stories (our of 2500 HEIs taking part in the Erasmus programme 2000-2006).



Erasmus Mundus – External Cooperation Window

LOT 7 (Iraq, Iran, Yemen) – selection 2007

- Lunds Universitet partner of the consortium



European Erasmus Mundus Master of Science and Earth Observation for Environmental Modelling and Management (GEM)

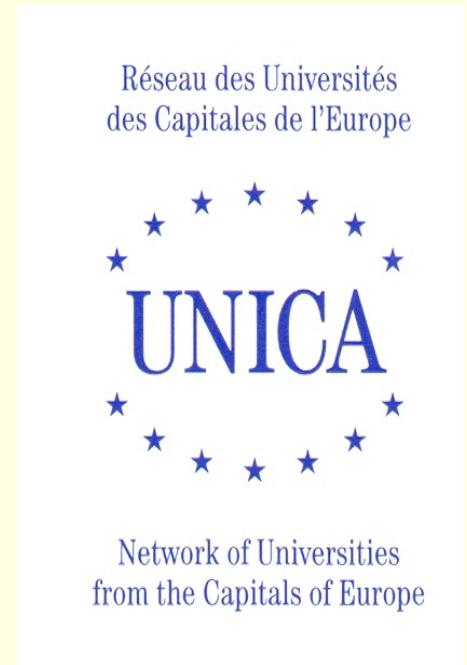
- In collaboration with the International Institute
- of Geo-Information Science and Earth Observation,
University of Southampton, Lunds Universiteit



UW is a member of numerous scientific, teaching and managerial associations and networks amongst others:



HUMANE
Heads of
University
Management
&
Administration
Network in
Europe



Cooperation with Sweden

- 20 bilateral agreements with 12 partner HEIs within the Erasmus Programme:

S BORAS01 HOGSKOLAN I BORAS

S FALUN01 HOGSKOLAN DALARNA, FALUN

S GOTEBOR01 GOTEBORGS UNIVERSITET

S HALMSTA01 HOGSKOLAN I HALMSTAD

S KARLSKR01 BLEKINGE INSTITUTE OF TECHNOLOGY



Cooperation with Sweden (2)

S KARLSTA01 KARLSTADS UNIVERSITET

S LUND01 LUNDS UNIVERSITET

S MALMO01 MALMO HOGSKOLA

S STOCKHO01 STOCKHOLMS UNIVERSITET

S SKOVDE01 HOGSKOLAN I SKOVDE

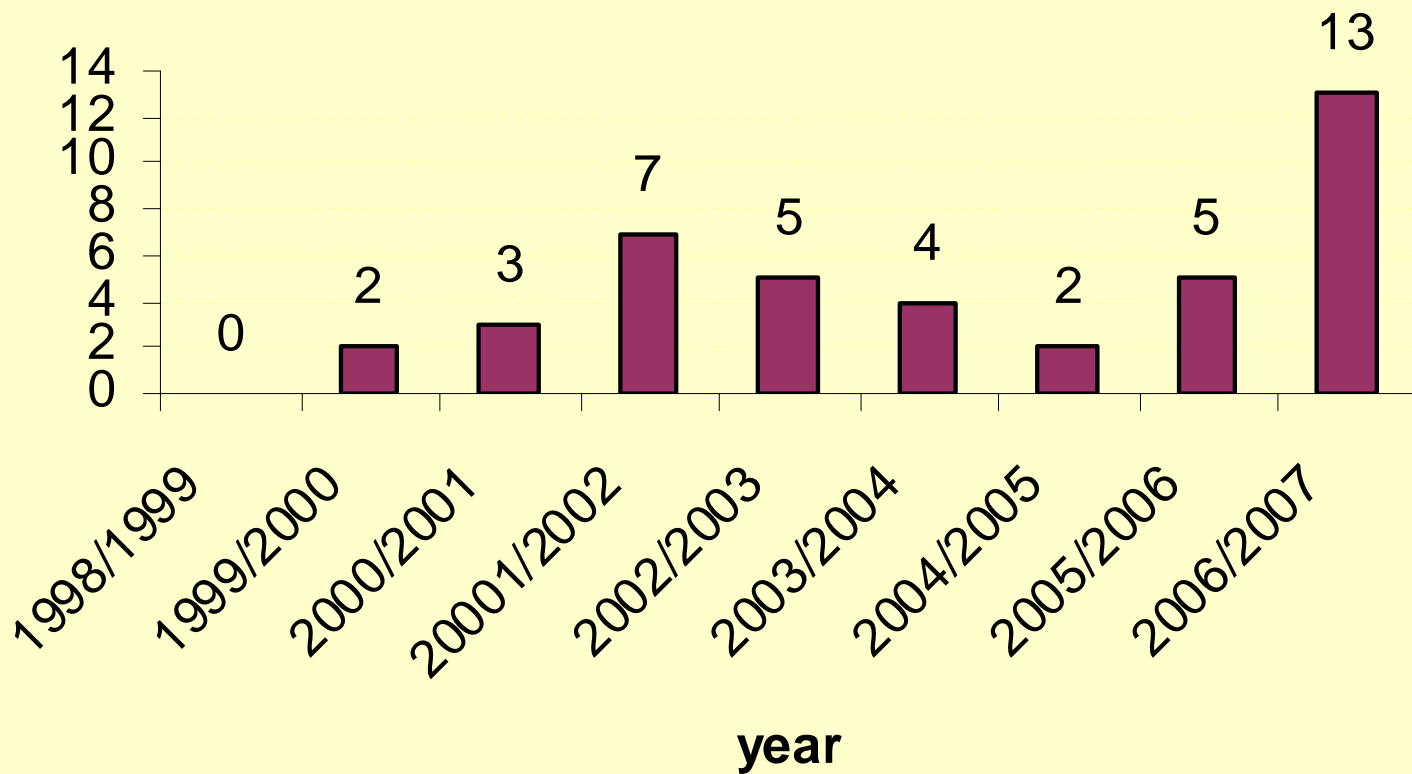
S UMEA01 UMEA UNIVERSITET

S UPPSALA01 UPPSALA UNIVERSITET

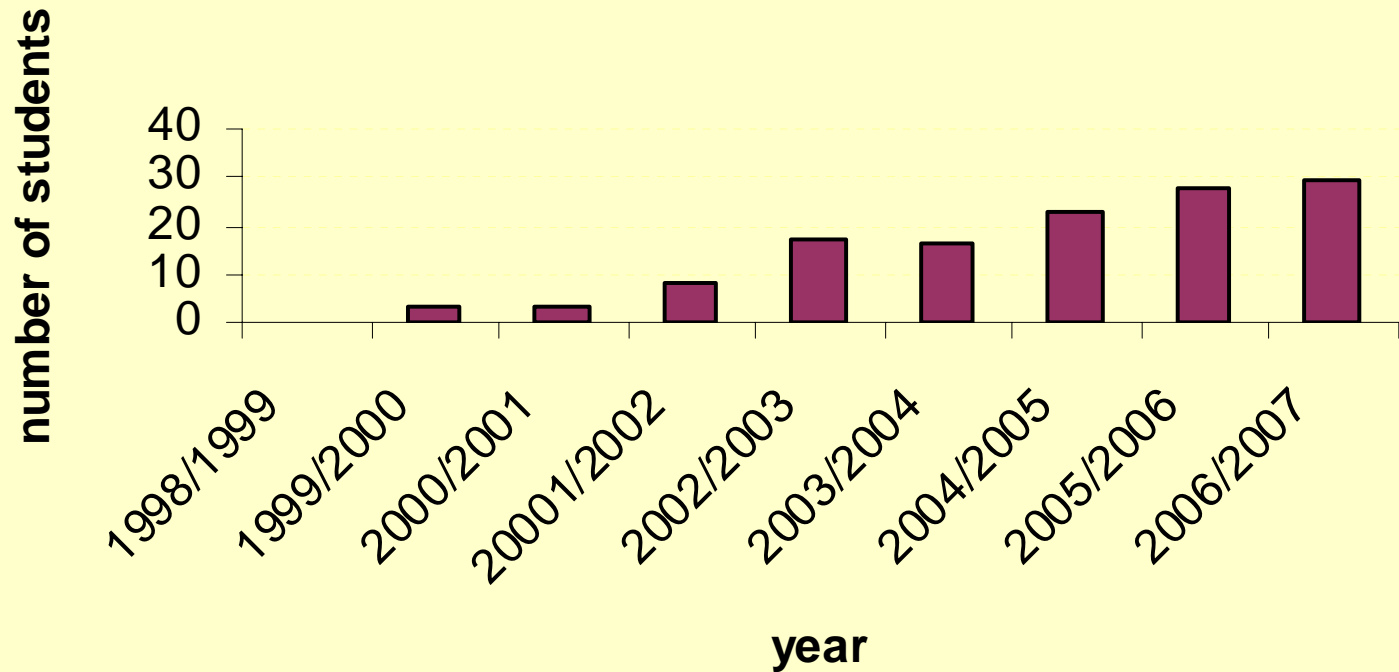


Incoming Swedish Students

number of students



Outgoing Student Mobility (to Sweden)





The University of Warsaw

the leading Polish scientific center

Two basic strategic objectives:

- to make the University competitive on the European and global scene, promoting interdisciplinary approaches and multidisciplinary research teams
- to meet the most urgent social needs promoting the development of social sciences, economics, management, modern languages, informatics, biotechnologies & applied physics



For further information:

The University of Warsaw

www.uw.edu.pl

International Relations Office

www.bwz.uw.edu.pl

www.iro.uw.edu.pl

